



Hand-Held Scarifiers



Needleguns



Walk-Behind Scarifiers



Impact Tools



Sanders



Specialty Tools

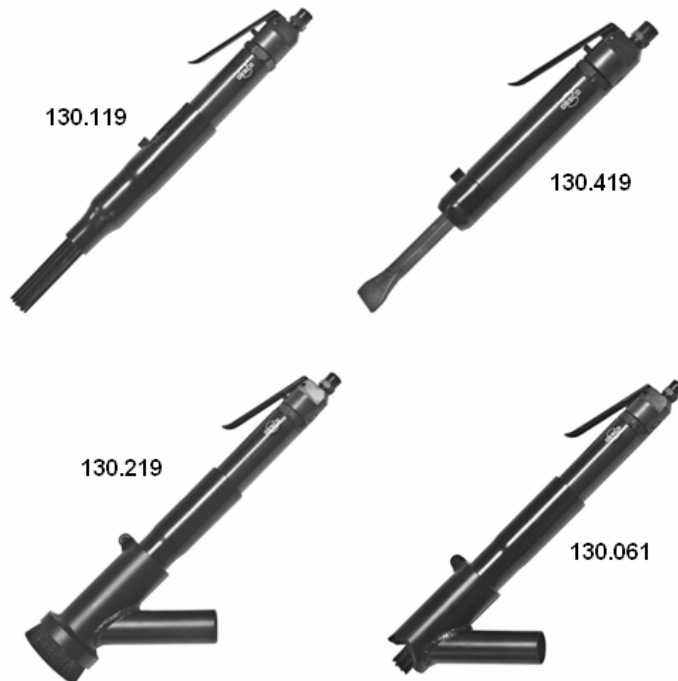


Industrial Vacuums



Model 19 Needlegun

Pneumatic



Configurations

Part	Description
130.119	Model 19 needlegun, no shroud
130.219	Model 19 needlegun, flat shroud
130.061	Model 19 needlegun, inside corner shroud
130.419	Model 19 chipping gun, no shroud

DESCO Mfg. Co., Inc.

23031 Arroyo Vista • Rancho Santa Margarita, CA 92688
949.858.7400 • 949.858.9141 fax • 800.337.2648 toll free
www.descomfg.com • info@descomfg.com

OPERATING INSTRUCTIONS

The Model 19 Needlegun is a revolutionary pneumatic tool that can be used for a wide range of jobs. The tool is lightweight and affords the user maximum ease and efficiency in a variety of applications. As with any product of a quality manufacture, service life largely depends on correct handling. These instructions are prepared to help you obtain maximum performance at all times.

Please review the following points so the needlegun will perform for many years to come.

MAIN APPLICATIONS

- de-slugging, de-sputtering of welds
- shot-peening after welding
- cleaning metal surfaces of rust and scale
- stripping paint
- cleaning castings
- removing cores
- cleaning brick and stone work
- cleaning ship plates, barges, buoys

CAUTIONS FOR USE

Air Pressure

Maximum performance is displayed at a gauge pressure of 6kg/cm². Rangewise, this is an air pressure from 5 to 7 kg/cm² (70 to 100 psi).

Air Line

Use 3/8" air hose between the compressor and the tool. Compressed air is cooled and its water content separated as soon as it leaves the compressor. A portion of the water content, however, is condensed in the piping and can enter the tool mechanism, which may cause trouble. Always install an air filter and an oiler between the compressor and the tool. The compressor used should have 2 horsepower for the needlegun.

Air Hose

Blow compressed air through the supply hose before connecting the tool.

Lubrication

Before connecting the hose, apply four to five drops of 2135TH oil at the air inlet (no additional lubrication is required when oiler is used). Use of a thicker oil can lead to reduced performance or malfunction. If a thicker oil is used by accident, wash it away immediately.

Idle Running

Idle operation will shorten the life of the tool and needles, and should be avoided.

CAUTIONS FOR OPERATION

The quick-reciprocating needles of the Model 19 Needlegun adjust automatically to surface contours during cleaning. Slight pressure of the needles against the work surface is sufficient for maximum performance. An upright tool position is best. The tool will efficiently clean uneven surfaces, get into grooves, corners and gaps, clean outside and inside surfaces, and clean spaces inaccessible to other types of tools.

The broken heads of needles must be removed from the cylinder, otherwise continuous operation with them causes malfunction and shortens the life of needle supporter.

CHANGING NEEDLES

1. With the needles pointed down, depress and rotate needle guide (round tube).
2. Slowly remove needles and needle guide (round tube).
3. From needle gun, remove needle holder, needles and needle spring from needle guide (round tube).
4. Replace damaged or worn needles from the counter-suck side of the needle holder.
5. After changing needles, assemble in the reverse manner of disassembly.

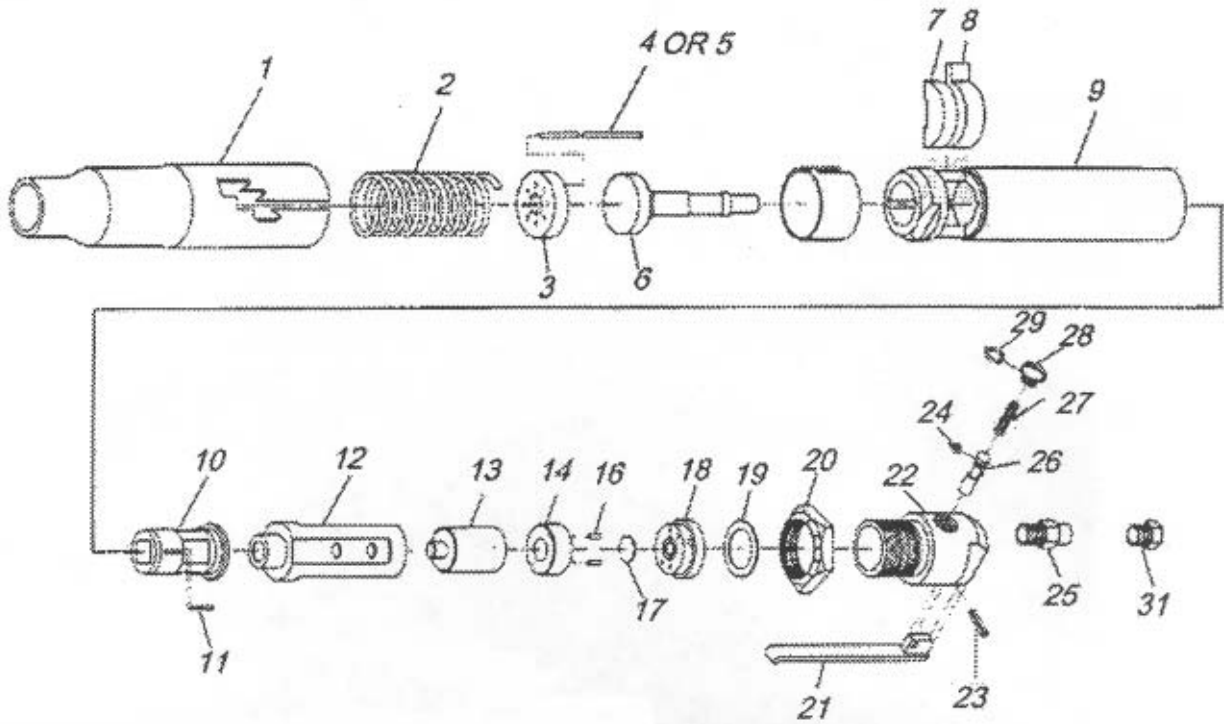
STORAGE

Avoid storing the tool in a location subject to high humidity. If the tool is left as it is used, residual moisture on the inside can cause rusting. Before storing, and after operation, oil the tool at the air inlet with spindle oil and run it for a short time.

ORDERING SERVICE PARTS

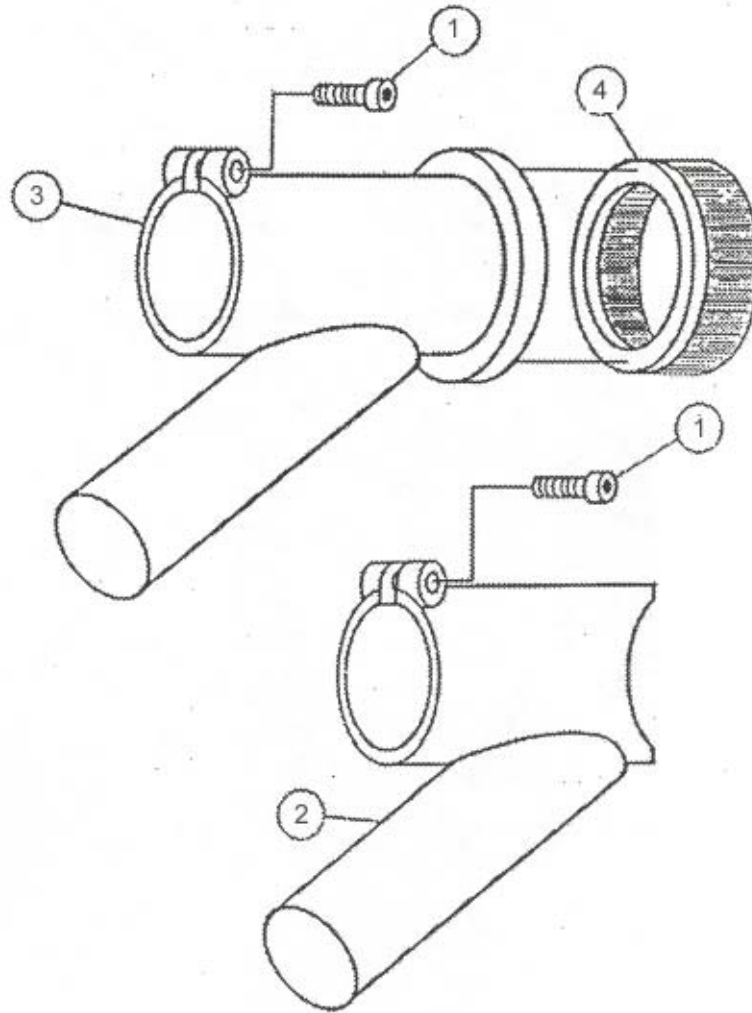
For further operation and handling information, or for replacement of parts and components, contact the sales representative from whom you purchased the tool, or the service division of our company.

Model 19 Needlegun



REF	PART #	DESCRIPTION	REF	PART #	DESCRIPTION
1	550.473	ROUND TUBE	17	550.475	VALVE
2	550.469	NEEDLE SPRING	18	550.065	VALVE BLOCK BUTTON
3	550.471	HOLDER	19	550.081	SPACER-BACKHEAD
4	130.024	NEEDLES (7")	20	550.063	BARREL LOCK RING
5	130.017	NEEDLES (5")	21	550.080	THROTTLE LEVER
6	550.470	DRIVER	22	550.078	LEVER-BACKHEAD
7	550.064	CHISEL BUFFER	23	550.079	THROTTLE LEVER PIN
8	550.075	CHISEL RETAINER	24	550.074	THROTTLE VALVE SEAL
9	550.472	BARREL	25	550.060	ADAPTER W/ MUFFLER SCREEN
10	550.070	TOOL NOSE	26	550.077	THROTTLE VALVE (INCL. #550.074)
11	550.061	TOOL NOSE KEY	27	550.073	THROTTLE VALVE SPRING
12	550.068	BARREL SLEEVE	28	550.072	THROTTLE VALVE CAP
13	550.067	PLUNGER	29	550.071	THROTTLE VALVE CAP GASKET
14	550.066	VALVE BLOCK	30	550.076	HANDLE BUSHING (NOT SHOWN)
15	550.069	CHISEL RETAINER CLIP (NOT SHOWN)	31	550.059	ADAPTER
16	550.476	VALVE BLOCK DOWEL PIN			

Model 19 Needlegun Shroud



REF	PART #	DESCRIPTION
1	750.006	BOLT 1/4-20 x 1
2	130.008	SHROUD INSIDE CORNER DCOA
3	130.043	SHROUD FLAT BRUSH DCOA
4	500.060	BRUSH