



**Hand-Held
Scarifiers**



Needleguns



**Walk-Behind
Scarifiers**



Impact Tools



Sanders



**Specialty
Tools**



**Industrial
Vacuums**



Model 32 Needlegun *Electric*



130.232 - w/Flat Shroud



130.332 - w/Inside Corner Shroud



130.132 - w/o Shroud

Configurations

Part	Description	Accessories Furnished
130.2326	Needlegun, System	Shrouds (Flat & Inside Corner), Allen wrench, needle reload, tool case.
130.232	Needlegun, Dust-free	Flat Shroud, Allen wrench
130.332	Needlegun, Dust-free	Inside corner, Allen wrench
130.132	Needlegun	None

DESCO Mfg. Co., Inc.

23031 Arroyo Vista • Rancho Santa Margarita, CA 92688
949.858.7400 • 949.858.9141 fax • 800.337.2648 toll free
www.descomfg.com • info@descomfg.com

Contents

INTRODUCTION	1
MAIN APPLICATIONS.....	1
TECHNICAL SPECIFICATIONS.....	1
CAUTIONS FOR USE	2
READ OPERATING INSTRUCTIONS	2
ALWAYS WEAR APPROVED EYE PROTECTION	2
HEARING PROTECTION IS RECOMMENDED.....	2
AVOID PROLONGED EXPOSURE TO VIBRATION	2
IDLE RUNNING	2
INSTALLATION.....	3
OPERATION.....	3
LUBRICATION	3
INSTALLING REPLACEMENT NEEDLES.....	4
STORAGE	4
ORDERING SERVICE PARTS	4
TROUBLESHOOTING	4
SCHEMATICS	5
MODEL 32 DUST COLLECTOR.....	5
MODEL 32 NEEDLEGUN.....	6



Introduction

The Desco Model 32 dust free needle scaler solves the problem of what to do when you can't get compressed air at a job site. The Model 32 operates off of standard 110 volt electricity. Just plug it in and get the job done. The Model 32 is double insulated, so no grounding is necessary. The side handle is adjustable and rotates 360° to any desired position.

These instructions are prepared to help you safely operate the tool and obtain maximum performance at all times. As with any product of a quality manufacture, service life largely depends on correct handling.

Main Applications

- De-slugging welds
- Shot-peen profile (Capable of achieving SSPC SP-11)
- Stripping paint
- Cleaning castings
- Cleaning angles & corners
- Removing rust & corrosion
- Removing non-skid

Technical Specifications

Power Supply	110V-120V
Power Consumption	300 watts
Rated Current	2.8 amps
Duty Cycle	30 minutes
Strokes per minute	3,000 SPM
Needle Size (number)	
Standard Needles with Machine	3mm x 7" (15)
Optional Needle Size	2mm x 7" (32)
Power Cord Length	16-1/2"
Dimension (L x W x H)	10-15/32" x 3-7/32" x 6-3/4"
Weight	9.9 lbs.

Cautions for Use



PLEASE READ AND FOLLOW ALL WARNINGS



Read Operating Instructions

Always become familiar with all the instructions and warnings before operating any power tool.

Always Wear Approved Eye Protection



Impact resistant eye protection should meet or exceed the standards as set forth in the United States ANSI Z87.1, Occupational and Educational Eye and Face Protection. Look for the marking Z87.1 on your eye protection to insure that it is an approved style. For further information, ANSI Z87.1, Occupational and Educational Eye and Face Protection, is available from the American National Standards Institute, Inc., 11 West 42nd Street, New York, NY 10036.

Hearing Protection is Recommended



Hearing protection should be used when the noise level exposure equals or exceeds an 8 hour time-weighted average sound level of 85dBA. Process noise, reflective surfaces, other tools being operated nearby, all add to the noise level present in your work area. If you are unable to determine your noise level exposure, we recommend the use of hearing protection.

Avoid Prolonged Exposure to Vibration



Power tools can vibrate during use. Prolonged exposure to vibration or very repetitive hand and arm movements, can cause injury. Stop using any tool if discomfort, tingling feeling or pain occurs. You should consult your physician before resuming use of the tool.

Idle Running

Idle operation will shorten the life of the tool and needles and should be avoided.

Installation

The Desco Model 32 Needle Scaler is delivered ready to use. Simply plug into a 110v power source and you are ready to work.

Operation

Scaling efficiency depends on the force applied to the scaler. For efficient material removal on most applications, applying a light hold down pressure will give the best results. Do not bear down. More force does not equal more productivity.

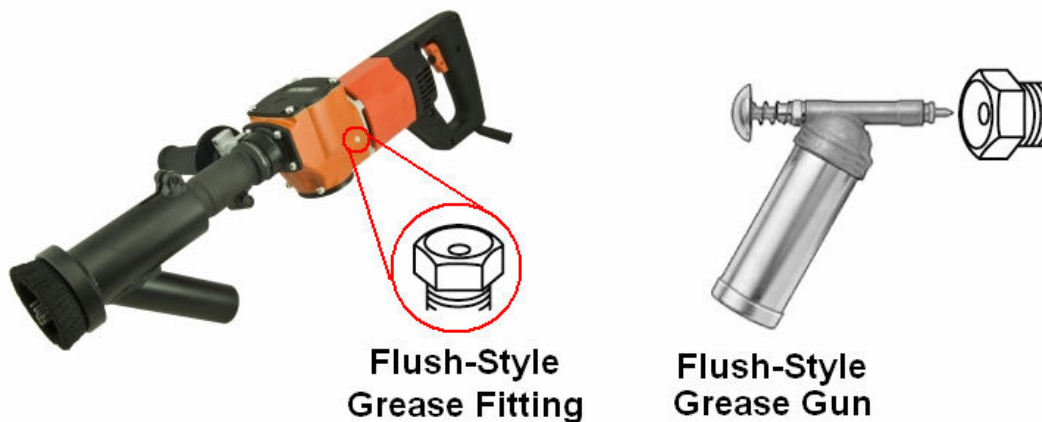
Grasp the tool firmly with both hands. Hold the needle scaler with the needles at an angle of slightly less than 90° to the work surface. Start the tool by pulling the trigger.

The Model 32 needle scaler has a 30 minute duty cycle. That means you can run the tool for no longer than 30 minutes at a time before stopping to let the motor cool. Failure to observe the 30 minute duty cycle will significantly reduce tool life.

Check condition of tool and needles before each use. Avoid free air operation of this tool, always apply tool to work before pressing throttle.

Lubrication

- 1) **Every 100 Hours of Operation** – Grease the flush-style grease fitting with a flush style grease gun every 100 hours of operation using a quality black lithium grease.



- 2) **Every Needle Change** – Clean needle holder, throttle anvil and cylinder assembly with a clean cloth then apply a light machine oil to these parts before re-assembling.

Installing Replacement Needles

Be sure to unplug tool from power supply before performing any maintenance operation. This will prevent the tool from operating if the throttle is accidentally engaged.

1. Remove needle guide – Loosen needle guide retaining bolt (ref. 2) with Allen wrench. Twist and pull needle guide (ref. 1) to remove from tool body.
2. Replace needles – Remove old needles (ref. 5) from holder (ref. 4) and replace with new needles, making sure the needle heads fit into the countersunk holes in needle holder.
3. Lubricate – Clean and lubricate interior of needle guide (ref. 1) and cylinder assembly (ref. 7) with light machine oil. Clean and lubricate exterior of throttle anvil (ref. 6) and needle holder (ref. 4) with light machine oil.
4. Reassemble – Start with needle guide (ref. 1). Insert into needle guide in sequence: *A*) Spring (ref. 3), *B*) Needle holder (ref. 4) loaded with needles (ref. 5), and *C*) Throttle anvil (ref. 6). Now push loaded needle guide onto cylinder assembly (ref. 7) and tighten retaining bolt (ref. 2).

Storage

Avoid storing the tool in a location subject to high humidity. If the tool is left as it is used, residual moisture on the inside can cause rusting.

Ordering Service Parts

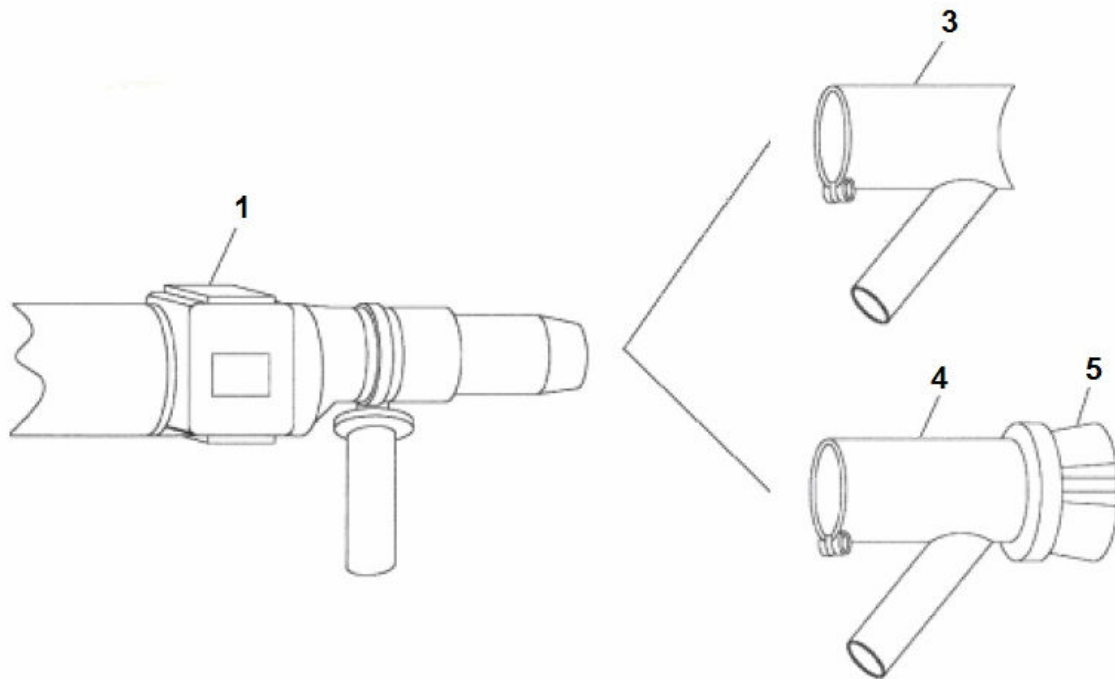
For further operation and handling information, or for replacement of parts and components, contact the sales representative from whom you purchased the tool, or the service division of our company.

Troubleshooting

Symptom	Probable Cause
Tool Jammed	When the tool jams, the most likely cause is lack of lubrication. To correct, disassemble, clean, inspect, lubricate and reassemble. If the problem persists, please contact your Desco representative.
Needles breaking	Short needle life is often caused by the tool operator bearing down on the tool too hard. Use light hold down pressure only and let the tool do the work. Be sure to dis-assemble and replace broken needles before proceeding.
Slow performance	Slow performance is usually caused by lack of lubrication. Perform lubrication maintenance as necessary.

Schematics

Model 32 Dust Collector



Ref	Part	Description
1	130.132	Electric Needlegun
-	n/a	Sleeve (Obsolete, not pictured.)
3	130.076	Shroud, Inside Corner
4	130.075	Shroud, Flat Brush
5	500.060	Brush

Ref	Part	Description	Ref	Part	Description
1	550.710	Anvil Guide	37	550.745	Screw, 5 x 15
2	550.711	Bolt, Hex, 8 x 25	38	550.746	Screw, tapping, 5 x 40
3	550.712	Spring 3.2 x 32.3 x 60	39	550.747	Screw, tapping, 5 x 100
4	130.234	Needle Supporter, 3mm	40	550.748	Pinion
5	130.024	Needles, 3mm x 7in	41	550.749	Bearing Bracket
6	550.714	Throttle Anvil	42	550.750	Ball Bearing
7	550.715	Cylinder Assy	43	550.751	Bearing Retainer
8	550.716	Handle Holder	44	550.752	Screw, 4 x 8
9	550.717	Holder Cover	45	550.753	Key
10	550.718	Side Handle	46	550.754	Armature Sub Assy
11	550.719	Piston	47	550.755	Washer
12	550.720	Spring, 5 x 26 x 28.5	48	550.756	Ball Bearing
13	550.721	Hammer	49	550.757	Fan Guide
14	550.722	Spring 3.8 x 15.9 x 17.5	50	550.758	Screw 4 x 60
15	550.723	Stopper	51	550.759	Washer, M4
16	550.724	Spring Washer, M6	52	550.760	Stator Sub Assy
17	550.725	Bolt, Hex, 6 x 25	53	550.761	Rubber Plug
18	550.726	Crank Case	54	550.762	Frame Assy
19	550.727	Oil Cup, w/Ball 1/4	57	550.763	Nut, Hex, M4
20	550.728	Bearing Case	58	550.764	Brush Holder
21	550.729	Screw, Flat, 5 x 30	59	550.765	Carbon Brush Assy
22	550.730	Spindle	60	550.766	Absorbing Rubber (B)
23	550.731	Ball Bearing	61	550.767	Cord Rod
24	550.732	Spacer, 29.1 x 34.9 x 16	62	550.768	Brush Holder Retainer
25	550.733	Bearing Set Screw	63	550.769	A Absorbing Rubber (A)
26	550.734	Gear	64	550.770	Switch Handle (B)
27	550.735	Key	65	550.771	Switch
28	550.736	Screw, Hex, 5 x 14	66	550.772	Cord Clamp
29	550.737	Crank Rod	67	550.773	Screw TPF, 4 x 14
30	550.738	Needle Bearing	68	550.774	Sponge
31	550.739	Thrust Washer	69	550.775	Fuse Holder, 115V
32	550.740	Retaining Ring G-14	70	550.776	Fuse, 5A
33	550.741	Roller, Long Cylinder	71	550.777	Switch Handle (A)
34	550.742	Gasket	72	550.778	Screw
35	550.743	Cap	73	550.779	Strain Relief
36	550.744	Spring Washer, M5	74	550.780	Cord Assy, 115V